

The special feature for this further developed knocker is the design of a particularly compact unit. In addition, the knocker is flexible in use as it is suitable for the single-impact control and also for the interval impact-self-control.

Impact Force:

Using the single-impact triggering, the impact force can be regulated by varying the input pressure steplessly.

Using the interval impact-self-control there are 3 different impact strengths available.

Pulsing:

Using the single-impact triggering, the impact is initiated by opening and closing a preceding 3/2-way valve (optional). The activation of the valve takes place e.g. by a PLC.



FKL-50in



FKL-100in



FKL-200in

Using the interval impact-self-control there is just a Pneumatic Self-control (PST) required (optional available). Initiating pressure onto the system, the pulsing can be adjusted at the throttle valve of the Pneumatic Self-control (PST).

The knocker is supplied with a base plate, to fix the knocker and transfer the impact impulse. Knocker casing and base plate are made of aluminum. The impact plate (integrated in the base plate) is made of impact resistant special plastic.

This further developed knocker can replace current FKL...si types.

The pneumatic knocker can be operated with dry compressed air without lubrication.

Please note: Using oily compressed air for operating the knocker, the oily air is rinsing out the basic lubrication of the knocker. To avoid this, retain using oily compressed air for operating

The knocker can be operated in the temperature range from -20° to 85°C in the standard version. For temperature ranges down to -40° or up to 150°C appropriate special versions are available on request.

The knocker can be used in dusty environments, wet areas or outdoors. For areas subject to explosion hazards, a special version is available (ATEX Ex II 2 G / D c T6 T85°C).

TECHNICAL DETAILS

Unit	Minimum operation pressure [bar]			Power / impact	Impuls / impact	Weight	Air consumption / impact
	Control drilling no.						
	①	②	③	Nm	Ns	kg	l
FKL-25in	3,0	4,5	6,5	1 - 7	0,1 - 1,4	1,03	0,07 - 0,2
FKL-50in	3,0	4,5	6,5	5 - 21	1,2 - 4,7	1,85	0,1 - 0,3
FKL-100in	4,0	5,0	6,5	10 - 70	2,1 - 14,7	4,5	0,5 - 1,1
FKL-150in	5,3	6,7	8,0	50 - 196	10,4 - 40,6	9,5	1,2 - 2,0
FKL-200in	5,3	6,7	8,0	100 - 280	28,8 - 80,5	14,8	2,2 - 3,3

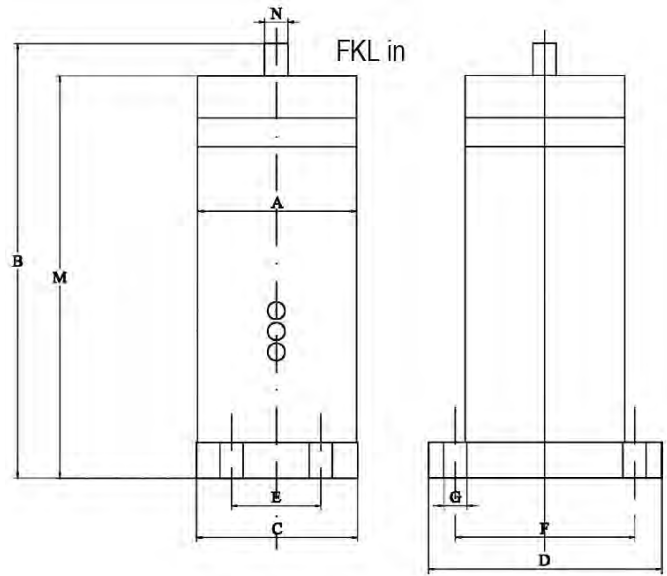
The technical specifications were measured using a Kistler 3-axis dynamometer. The tests were carried out on a solid lab test block and displayed using a Kistler control monitor (Como).

Please find further information at www.aldak.de: " **pneumatische Vibratoren** „

DIMENSIONS in mm:

Unit	A	B	C	D
FKL-25in	Ø 52	175	53	88
FKL-50in	Ø 64	194	66	115
FKL-100in	Ø 89	242	90	130
FKL-150in	Ø 118	330	-	Ø 140
FKL-200in	Ø 147	337	-	Ø 180

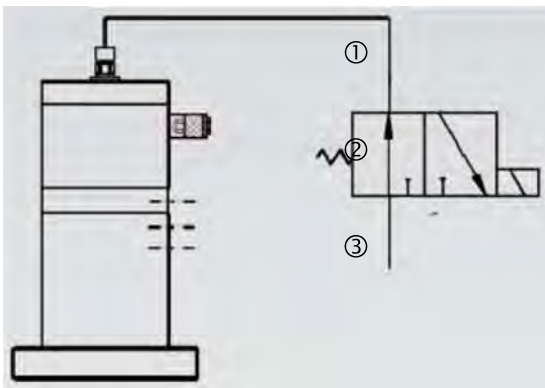
Unit	E	F	G	M	N
FKL-25in	-	70	9	155	13
FKL-50in	-	90	13	177	13
FKL-100in	50	100	13	224	13
FKL-150in	-	Ø 115	13	310	13
FKL-200in	-	Ø 152	17	319	13



Standard-Installation examples of FKL-in knockers

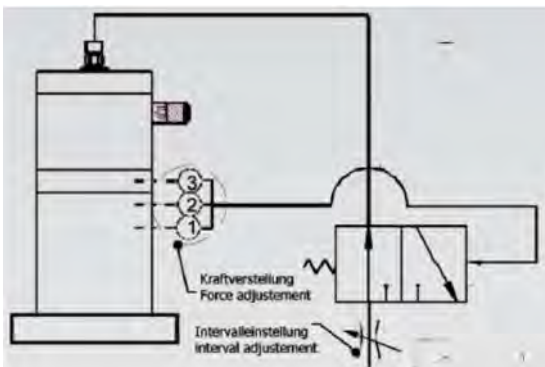
Single impact mode

The impact is initiated immediately after switching the 3/2-way valve. Multiple knockers can be connected in parallel.



Interval impact mode

The impact depends on time interval that is adjusted by a throttle valve. The power is adjusted by the three control drillings 1 – 3



FKL-150in

The setting of a continuous or demanded impact frequency is adjusted either by the customer, by electrical, pneumatic or mechanical impulse onto a corresponding 3/2-way valve (see left diagram). Alternatively, the knockers may be clocked even without external impulses by a control system e.g. the pneumatic self-controlling (PST) (optional).

We reserve us the right to improve specifications, modify or withdraw our products. There is no obligation to provide information in advance.

Please find further information at www.aldak.de: " **pneumatische Vibratoren** „